

Cathexis Vision[®]

2025

SOFTWARE SOLUTION



Simplify Life and Secure the Future with CathexisVision 2025

Monitoring and managing facilities in today's interconnected, fast-paced world can be overwhelming. How can security teams navigate a maze of systems, respond to critical events in real time, and keep everything running smoothly? These challenges require smart solutions.

The CathexisVision 2025 software ecosystem empowers you with the tools to forge a clear path through the competing demands of security management. By seamlessly integrating advanced features and systems into a single, intuitive platform, the CathexisVision solution – comprising the CathexisVision server software, CathexisVision Carbon client interface, and the multi-site management solutions, CathexisVision MultiSite, CathexisVision Enterprise and CathexisVision Mobile – makes it easy to use video data effectively so that operations are efficient and streamlined.

This year's release is designed to deliver value across all areas of your security management, with features that build on the stable, scalable, and powerful CathexisVision offering.

We invite you to experience the CathexisVision 2025 solution and benefit from the data-driven insights, swift analysis and comprehensive utility this package offers.

The result? Life is simpler and more secure.

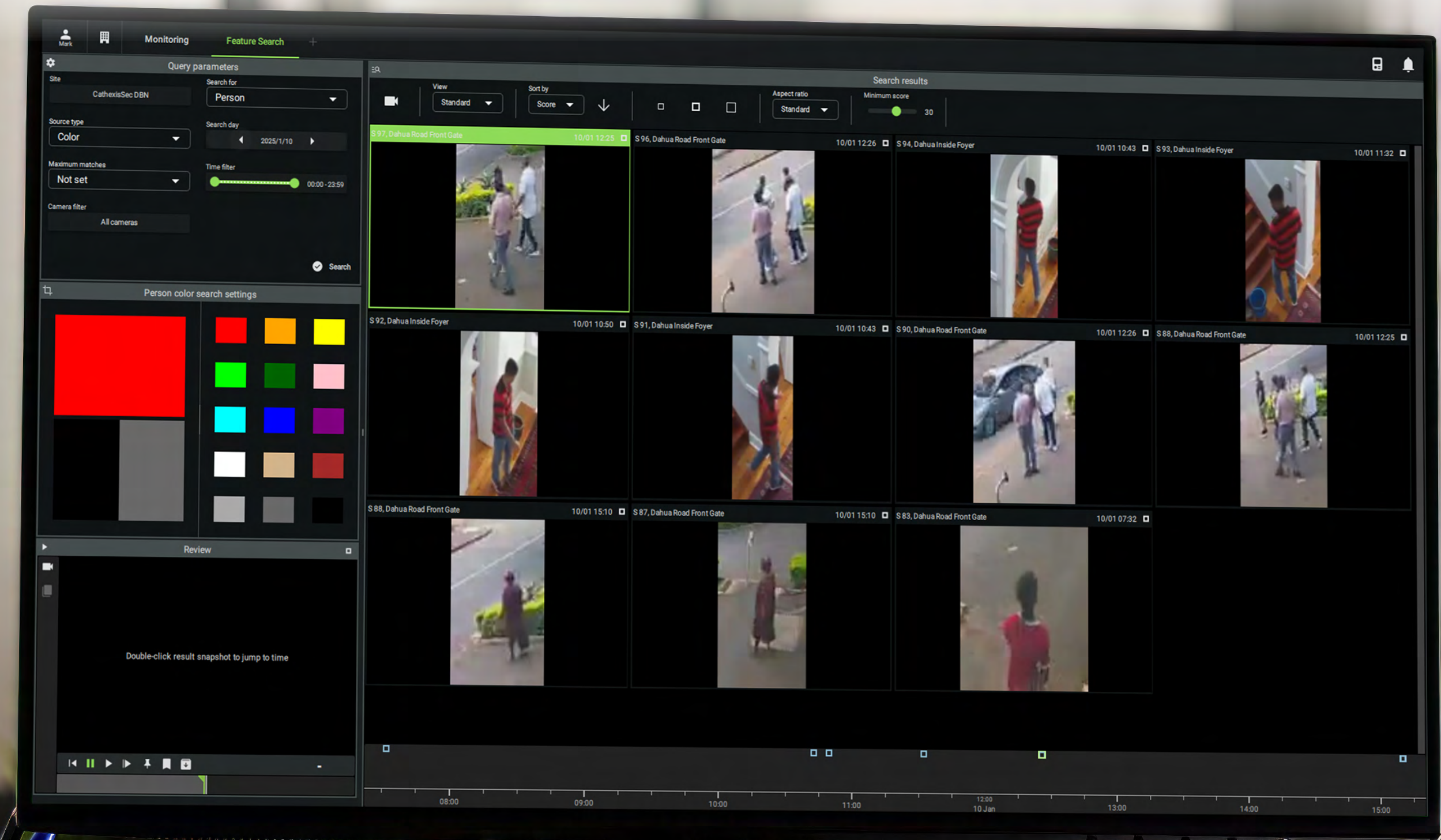




Advanced Feature Search in Carbon

Imagine trying to locate a culprit who was wearing a red jacket in a crowded area on a busy day. Without the right tools, it could take hours to try to achieve this. Moreover, an operator could miss important details or misidentify features.

Feature Search is configured in CathexisVision server software and available to use in the Carbon interface. Using Carbon's advanced Feature Search tools, you can filter searches according to attributes such as colour and type of object (vehicle or person) to pinpoint relevant footage in seconds. It will present all instances of individuals wearing red, for example, within a set time period and selected cameras. This tool delivers accurate information to operators quickly, and saves them significant time instead of having to piece together a timeline of footage that features the target individual or object.





CathexisVision Web

You need to monitor and review footage on demand and don't want to spend time or resources installing and configuring client software on every device you view your site from. What's the solution?

With CathexisVision Web, our web-based client application, you can view and review footage from your NVR installation directly via a browser. CathexisVision Web's intuitive interface is easy to operate, giving your team the capacity to monitor footage from any machine anywhere in the world.

There's no need to install client software – simply connect to CathexisVision Web.



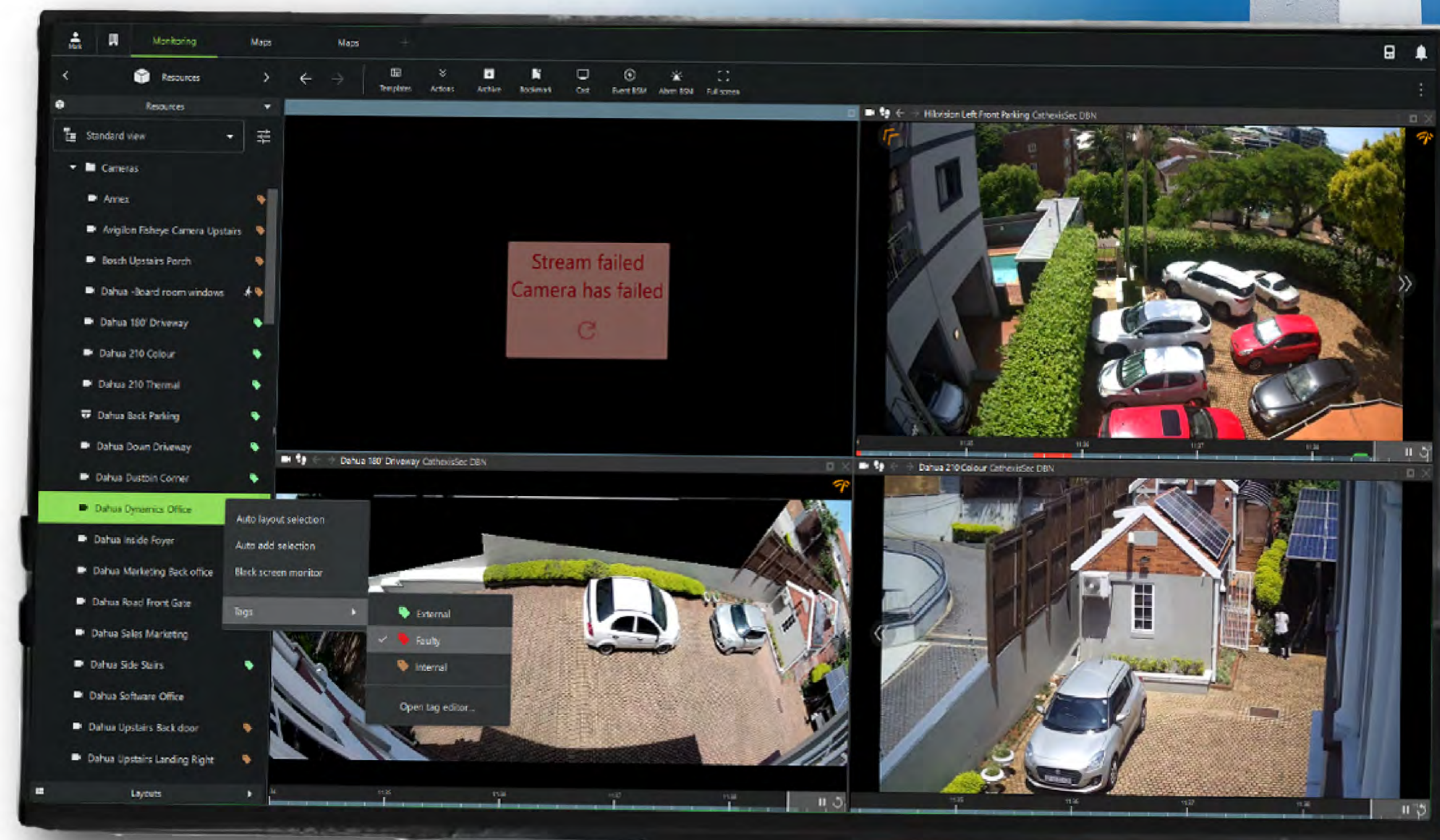


Resource Tagging

When monitoring a large site with hundreds of cameras, you need a way to identify resources with similar attributes to speed up navigation.

Resource tagging is a feature in Carbon that facilitates easier searches. Users with appropriate permissions can add descriptive tags to resources such as cameras, alarms, maps and outputs. For example, you might want to label a faulty camera with a red tag so that operators can locate them easily in the resource tree. Resource tags can be searched and filtered. They enable operational flexibility, easy navigation and swift identification of relevant resources.

FAULTY



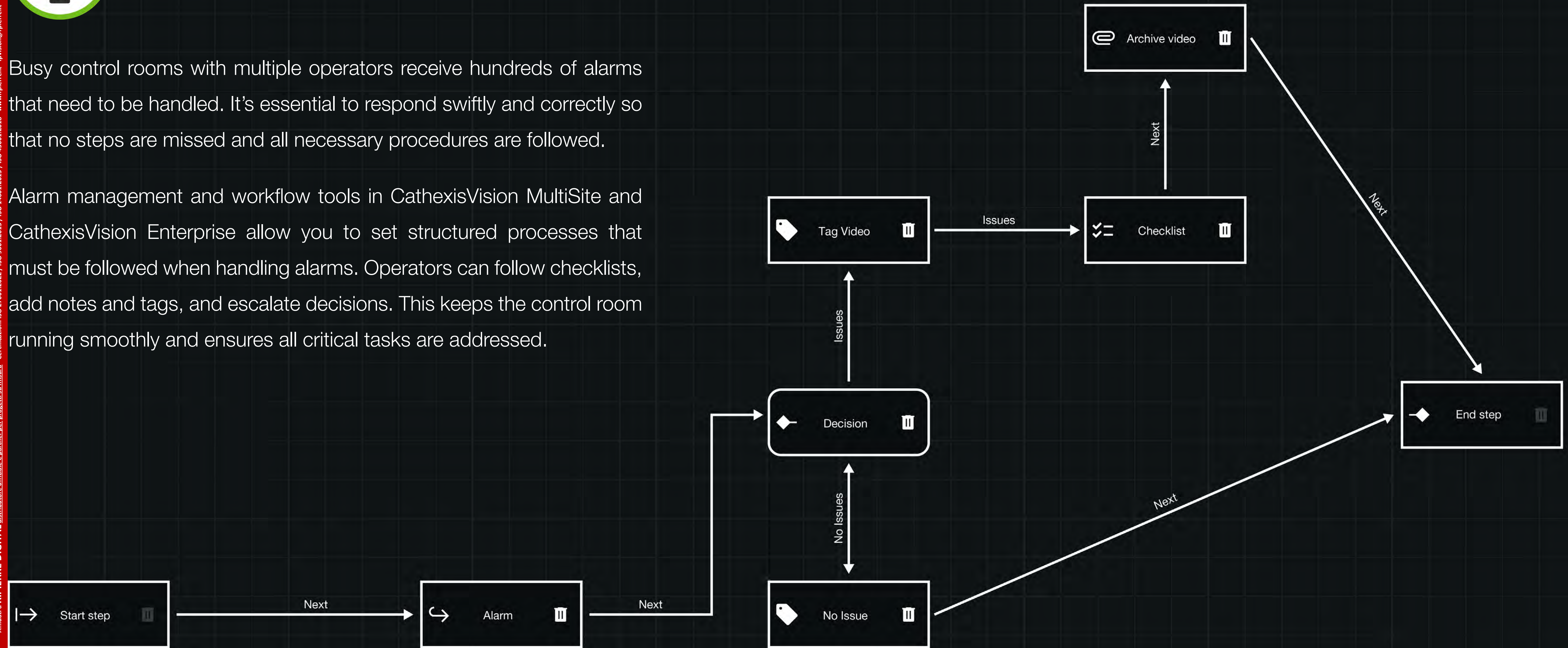


Alarm Management Workflows

Affiliati a R. PIERRE DIGITAL distributore ufficiale e partner per progetti su misura - Certificazioni ISO 27001:2022 / ISO 9001:2015 / ISO 14001:2015 / ISO 45001:2018 - www.rpierre.it - ipvision@rpierre.it - 0331595900

Busy control rooms with multiple operators receive hundreds of alarms that need to be handled. It's essential to respond swiftly and correctly so that no steps are missed and all necessary procedures are followed.

Alarm management and workflow tools in CathexisVision MultiSite and CathexisVision Enterprise allow you to set structured processes that must be followed when handling alarms. Operators can follow checklists, add notes and tags, and escalate decisions. This keeps the control room running smoothly and ensures all critical tasks are addressed.

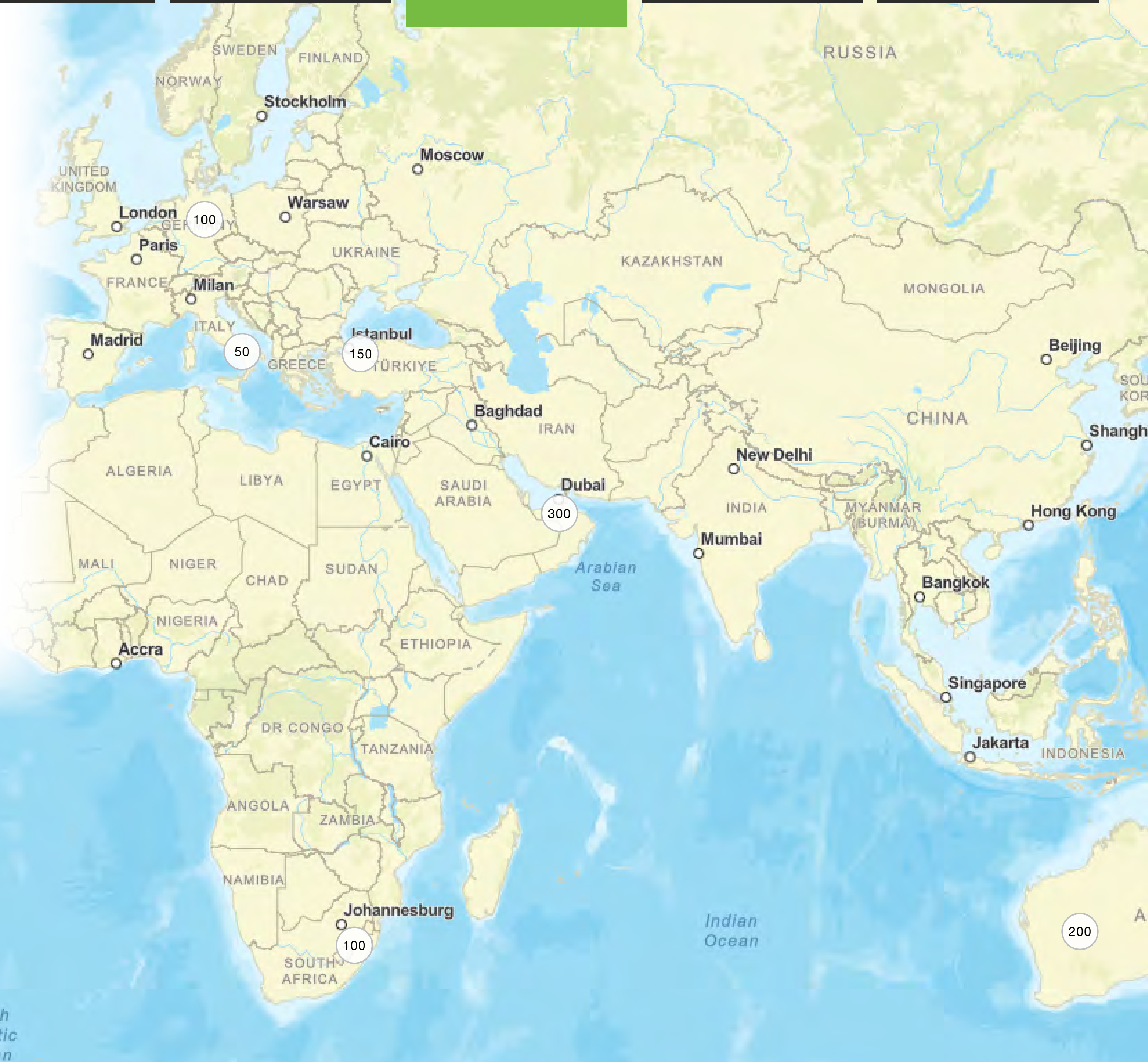




GIS Maps

Your video monitoring deployment covers a vast geographical area, with several sites and hundreds of resources to oversee. You need a solution that makes it easy to visualise important resources and connect them to their geographical location.

Resources can be overlaid on GIS maps in Carbon, incorporating geospatial data into the powerful CathexisVision product suite. Not only does this streamline asset management and planning, but it's also easier than ever to drill down into a site. Using the GIS map interface, you can view camera feeds, toggle outputs, and respond to incidents more quickly.





New Integrations

- Ajax Alarm Panel
- Axis Body-Worn Camera
- Bosch Fire Panel
- LMI Weighbridge
- Omnitrac Access Control
- Sensor Access Control

With an expanding site comes expanding security system requirements. For true scalability, you need to manage them all through a single platform. CathexisVision integrates seamlessly with a huge array of third-party systems, and we're always adding more. This reliable interoperability ensures a more secure, efficient site, with several options to choose from to suit your security requirements.

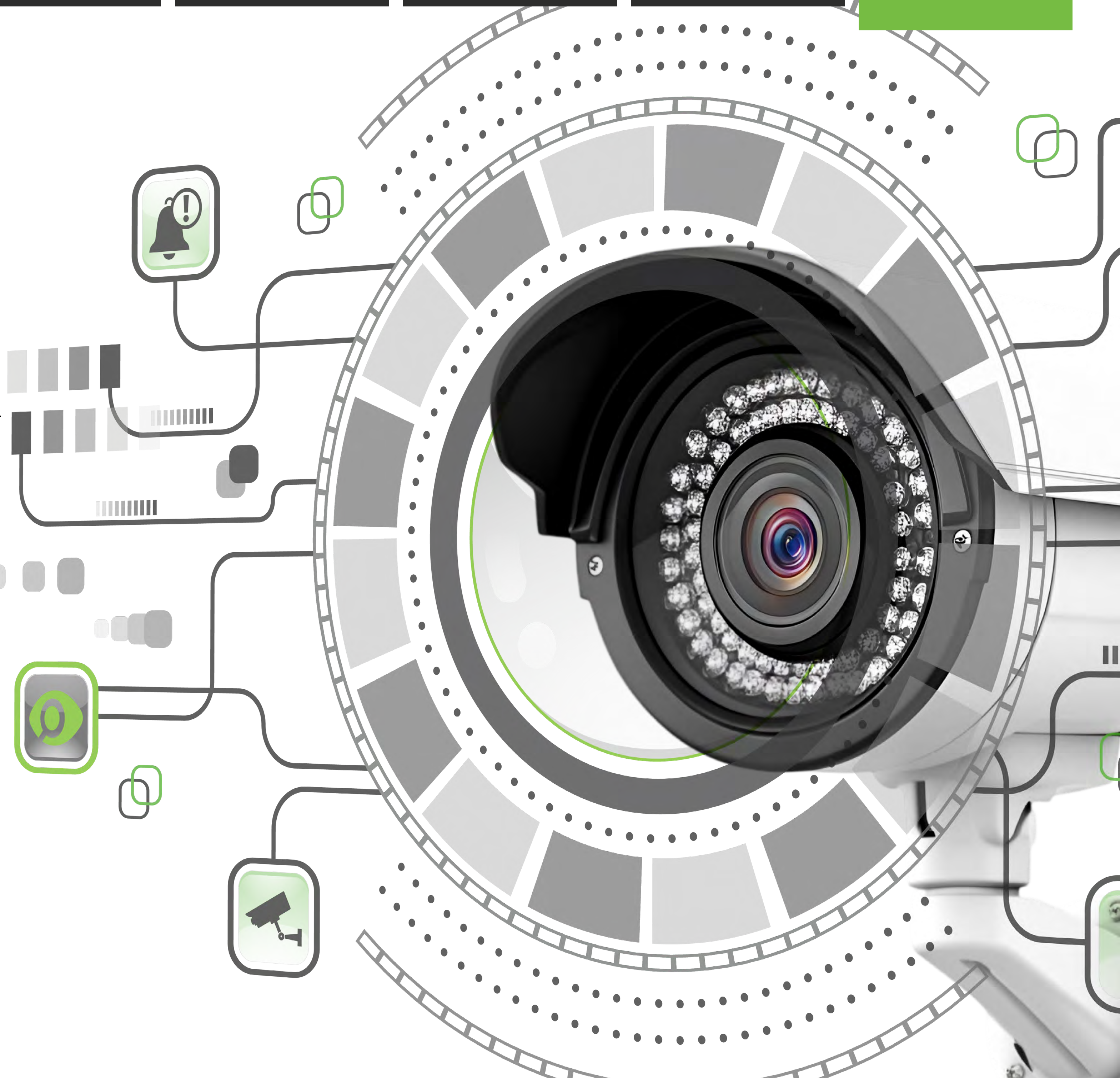
Setup and Monitoring Enhancements

Bulk Camera Update/Import in CathexisVision

Adding dozens – or even hundreds – of new cameras and manually configuring the settings for each one can be a laborious process that delays deployment, potentially introducing errors. With CathexisVision 2025, simply upload a CSV file with camera details, and the system will add or edit their camera settings in bulk. This functionality ensures faster setup and greater accuracy, saving time and resources.

Desktop Notifications in Carbon

Notifications for the Carbon desktop application are lightweight alarms linked to individual devices, providing real-time popups with audio cues so that operators are alerted to incidents straight away and can respond promptly.





Affiliati a R.PIERRE DIGITAL distributore ufficiale e partner per progetti su misura - Certificazioni ISO 27001:2022 / ISO 9001:2015 / ISO 4001:2015 / ISO 45001:2018 - www.rpierre.it - ipvision@rpierre.it - 0331599500

Experience the Power of CathexisVision 2025 Today.

Combining innovation with practicality, CathexisVision 2025 is the ideal video management solution to streamline operations, enhance security and simplify life.

Visit cathexisvideo.com to learn more.



R.PIERRE DIGITAL SPA
 Via Enrico Toti, 1 - 20025 Legnano MI
 T. +39 0331599500
 ipvision@rpierre.it - www.rpierre.it - LinkedIn - YouTube

CERTIFICAZIONI ISO
 SISTEMA DI GESTIONE PER LA QUALITÀ ISO 9001:2015
 SISTEMA DI GESTIONE AMBIENTALE ISO 14001:2015
 SISTEMA DI GESTIONE PER LA SALUTE E SICUREZZA SUL LAVORO ISO 45001:2018
 SISTEMA DI GESTIONE PER LA SICUREZZA DELLE INFORMAZIONI ISO 27001:2022

RATING DI LEGALITÀ ***

ESG ASSESSMENT Ecovadis Medaglia Oro - Synesgy Score A Ottimo - Open-es Score sostenibilità 96/100

Disclaimer: The information provided in this brochure is intended to be as accurate as possible; however, it is subject to change without notice.